

Sfps 1

Flat wagon
Wagon plats

Flachwagen
Vagone pianale

Technical data

Length over buffers	21 700 mm
Loading length	20 300 mm
Loading width	2 480 mm
Platform height	1 300 mm
Height of side stanchions	1 700 mm
Height of head stanchions	1 800 mm
Height of head boards	400 mm
Height of bolsters	70 mm
Tare weight	23 000 kg
Payload	57 000 kg
Minimum curve	50 m
Maximum speed	100 km/h

Technische Daten

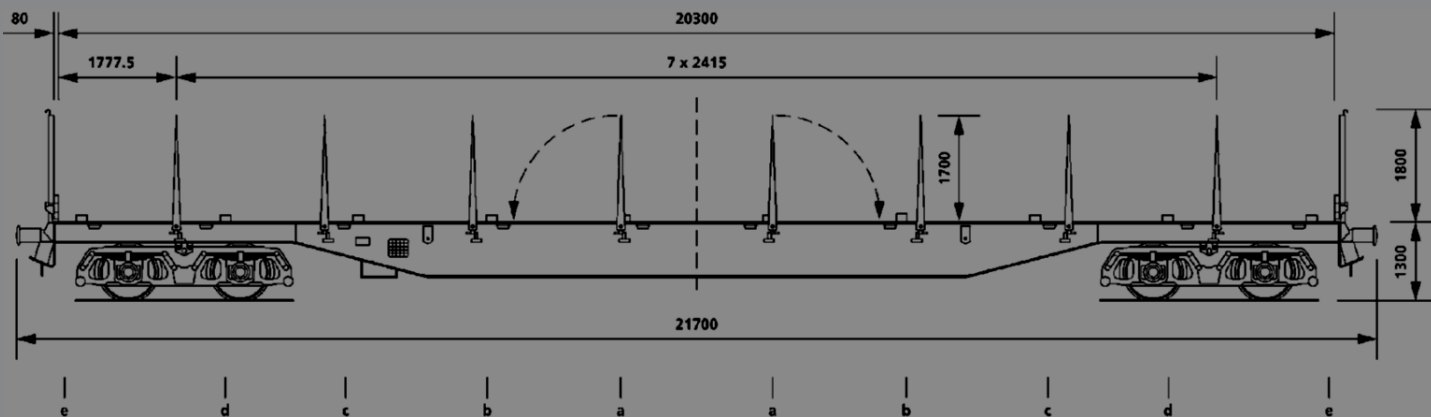
Länge über Puffer	21 700 mm
Ladelänge	20 300 mm
Ladebreite	2 480 mm
Fußbodenhöhe über Schienenoberkante	1 300 mm
Höhe der Seitenrungen	1 700 mm
Höhe der Stirnrungen	1 800 mm
Höhe der Stirnwand	400 mm
Höhe der Ladeschwellen	70 mm
Eigengewicht	23 000 kg
Lastgrenze	57 000 kg
Min. befahrbarer Kurvenradius	50 m
Max. Geschwindigkeit	100 km/h

Données techniques

Longueur hors tout	21 700 mm
Longueur utile	20 300 mm
Largeur utile	2 480 mm
Hauteur du plancher	1 300 mm
Hauteur des ranchers latéraux	1 700 mm
Hauteur des ranchers de bout	1 800 mm
Hauteur des haussettes de bout	400 mm
Hauteurs des traverses d'appui	70 mm
Tare	23 000 kg
Limite de charge	57 000 kg
Rayon de courbure minimum	50 m
Vitesse maximum	100 km/h

Dati tecnici

Lunghezza sopra respingenti	21 700 mm
Lunghezza di carico	20 300 mm
Larghezza di carico	2 480 mm
Altezza della piattaforma	1 300 mm
Altezza montanti laterali	1 700 mm
Altezza montanti di testa	1 800 mm
Altezza delle tavole	400 mm
Altezza del rinforzo	70 mm
Tara	23 000 kg
Carico utile	57 000 kg
Raggio min. di curvatura	50 m
Velocità massima	100 km/h



Wagon is fully approved for Continental Europe and UK channel traffic with the exception of Spain, Portugal and Finland.

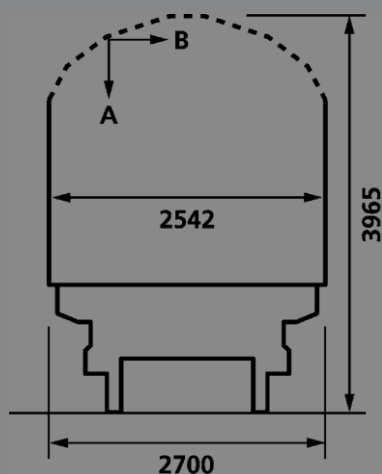
Loads can either be distributed evenly or on special bolsters. The wagon bolsters are hinged and fold into floor recesses. The maximum wheel pressure on the floor board is 5 tonnes.

The wagon has 8 collapsible stanchions per side. Those are each fitted with a hook for load security purpose. Winches are also fitted to enable tensioned strap security.

The head stanchions are removable and headboards can be deposited in specially fitted stanchion holds.

The headboards are collapsible and the wagon can be loaded/unloaded from head ramps.

Height above rail (mm)	Related $\frac{1}{2}$ width (mm)	Height above rail (mm)	Related $\frac{1}{2}$ width (mm)	Height above rail (mm)	Related $\frac{1}{2}$ width (mm)
3.140	1.271	3.420	1.126	3.700	763
3.150	1.266	3.430	1.121	3.710	749
3.160	1.261	3.440	1.109	3.720	736
3.170	1.256	3.450	1.095	3.730	723
3.180	1.251	3.460	1.081	3.740	709
3.190	1.246	3.470	1.068	3.750	696
3.200	1.241	3.480	1.055	3.760	666
3.210	1.235	3.490	1.041	3.770	636
3.220	1.230	3.500	1.028	3.780	606
3.230	1.225	3.510	1.015	3.790	576
3.240	1.220	3.520	1.001	3.800	547
3.250	1.215	3.530	988	3.810	517
3.260	1.209	3.540	975	3.820	487
3.270	1.204	3.550	962	3.830	457
3.280	1.179	3.560	948	3.840	427
3.290	1.194	3.570	935	3.850	397
3.300	1.189	3.580	922	3.860	367
3.310	1.183	3.590	909	3.870	327
3.320	1.178	3.600	895	3.880	307
3.330	1.173	3.610	882	3.890	278
3.340	1.168	3.620	869	3.900	248
3.350	1.163	3.630	856	3.910	218
3.360	1.157	3.640	842	3.920	188
3.370	1.152	3.650	829	3.930	158
3.380	1.147	3.660	816	3.940	128
3.390	1.142	3.670	803	3.950	98
3.400	1.137	3.680	789	3.960	69
3.410	1.131	3.690	776	3.965	53



Distribution of load		
Loading length	On floor	On bolsters
a-a 3.0m	30.0t	32t
b-b 5.0m	32.0t	36t
c-c 10.0m	39.0t	55t
d-d 15.0m	50.0t	57t
e-e 20.3m	57.0t	50t

Payload	A	B	C	
S	41.0	49.0	57	**
120	0.00			